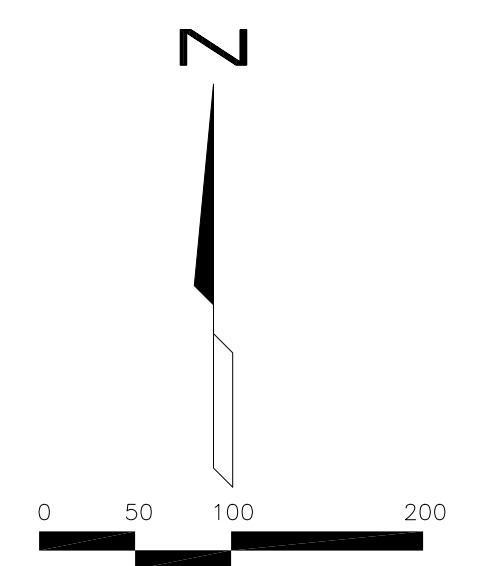
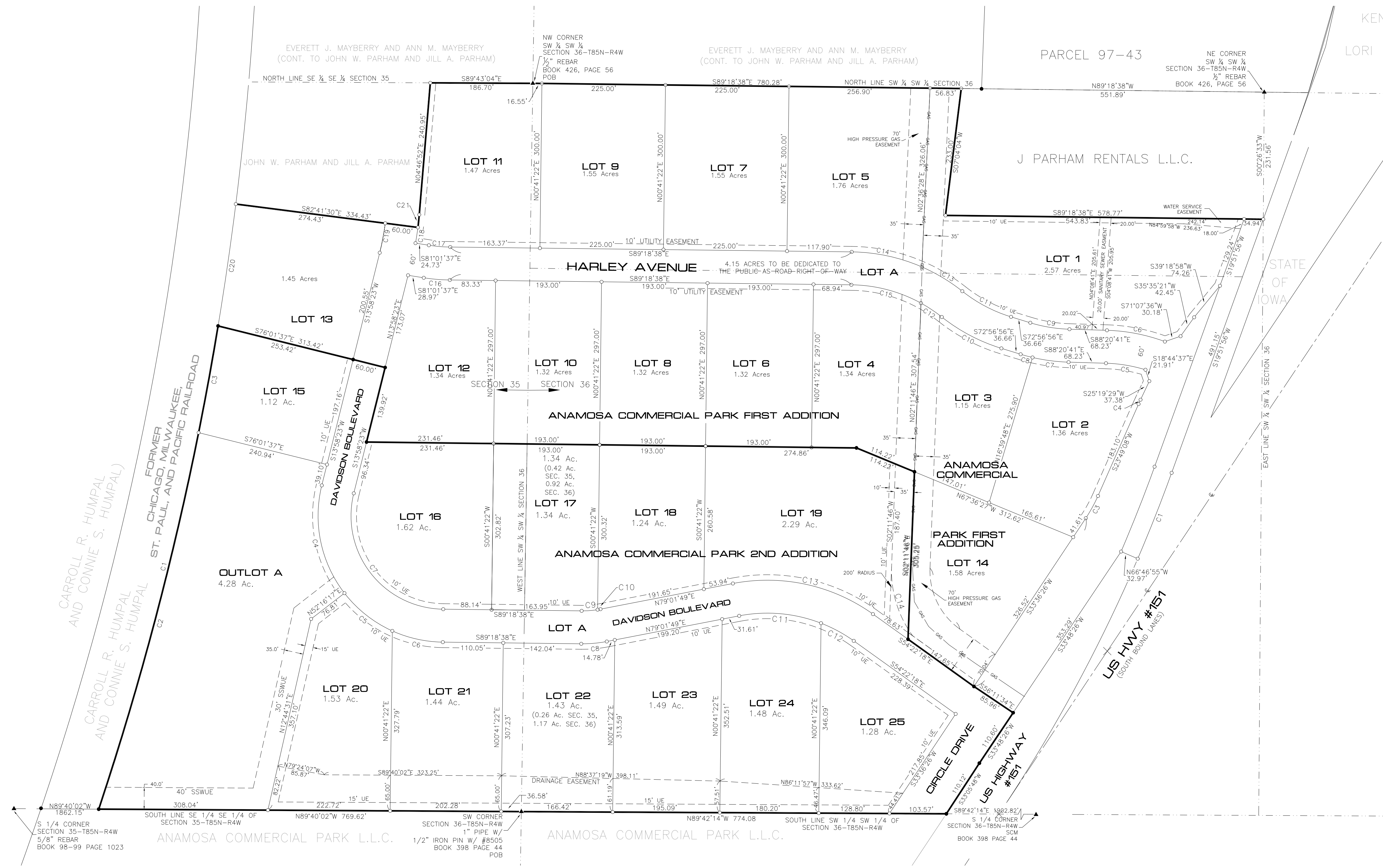


**ANAMOSA COMMERCIAL PARK FIRST AND SECOND ADDITIONS
TO THE CITY OF ANAMOSA, JONES COUNTY, IOWA**



- ▲ FOUND SECTION CORNER
- FOUND 1/2" REBAR W/ YPC 9647 OR AS LABELED
- ▣ FOUND CHISELLED X
- ▢ SET SECTION CORNER
- SET 1/2" REBAR W/ YPC #9647
- × SET CHISELLED X
- POB POINT OF BEGINNING
- () RECORDED AS
- SCM 4" x 4" CONCRETE POST W/DISK
- UE UTILITY EASEMENT
- UDE UTILITY & DRAINAGE EASEMENT
- (ROW) RIGHT-OF-WAY
- YPC YELLOW PLASTIC CAP
- SSWUE SANITARY SEWER, WATER MAIN & UTILITY EASEMENT

OWNER:
ANAMOSA COMMERCIAL PARK, L.L.C.
P.O. BOX 138
13225 CIRCLE DRIVE
ANAMOSA, IOWA 52205
(319) 462-6011 x8149

SURVEYOR:
BRAIN ENGINEERING, INC.
1540 MIDLAND COURT NE
CEDAR RAPIDS, IOWA 52402
294-9424

Book:	3
Scale:	1" = 100'
Drawn:	SMB
Checked:	
Reviewed:	
Date:	
Revision:	
Project No.:	213206-50
Page:	1

ANAMOSA COMMERCIAL PARK
FIRST AND SECOND ADDITIONS